



ROBOTIC PROCESS AUTOMATION
END-TO-END MONITORING
IT AUTOMATION
IT MONITORING



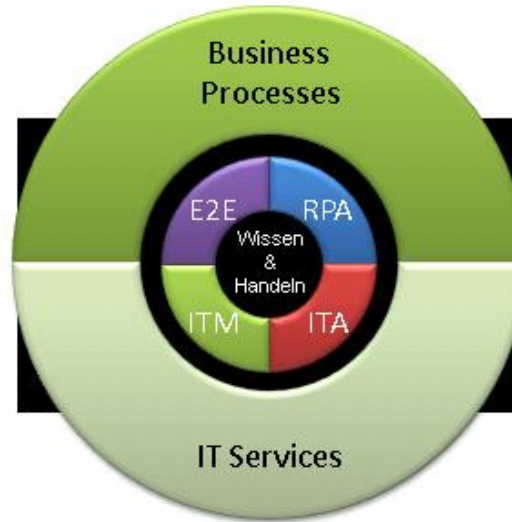
FUNCTIONAL OVERVIEW



TABLE OF CONTENTS

AMDOSOFT PORTFOLIO	3
b4 ENVIRONMENT	4
DASHBOARD	5
CONSOLE	6
REPORT DESIGNER ENGINE (RDE)	7
ROBOTIC PROCESS AUTOMATION (RPA)	8
END TO END MONITORING	9
IT AUTOMATION	10

AMDOSOFT PORTFOLIO



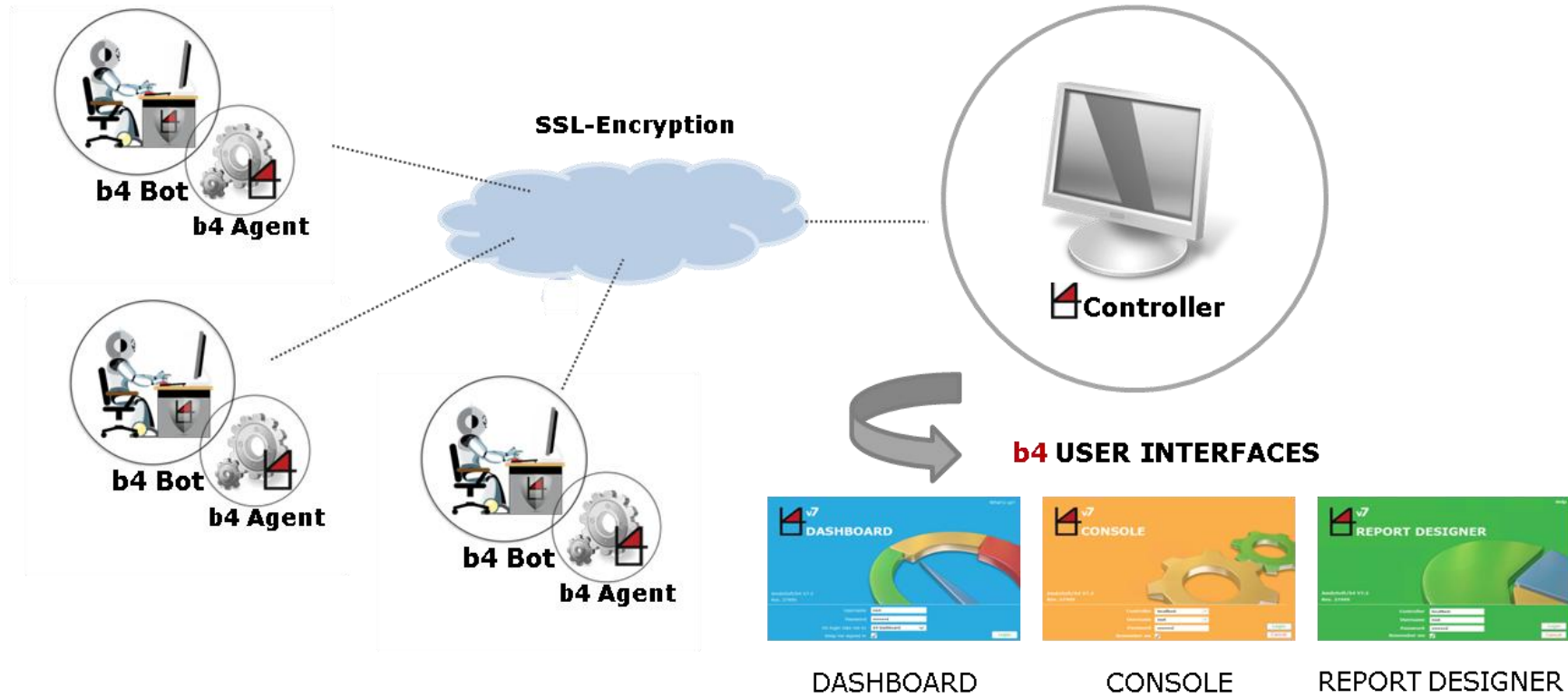
ROBOTIC PROCESS AUTOMATION

IT MONITORING

IT AUTOMATION

END TO END MONITORING

b4 ARCHITECTURE



DASHBOARD

The b4 dashboard is a web-based application which provides an overview of your RPA landscape status and the performance of your digital workforce.

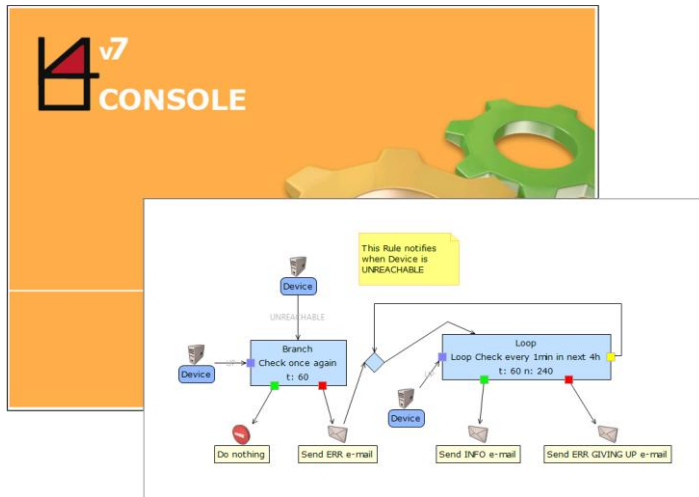


- ✓ Graphical representation of desired information
- ✓ Object-oriented implementation
- ✓ Playback of data unencrypted and in real time
- ✓ Data on active users, registered clients, b4 Bots, Workflows
- ✓ Large selection of filter functions, coloring and sorting-options
- ✓ Integrated sound-option

Live view for everything you don't want to lose sight of!

MANAGEMENT CONSOLE

In the b4 console you configure, automate and manage your entire b4 landscape.



Further b4 Console Moduls

- Maintenance Window
- Network Topology
- Scheduled Jobs Manager
- Schedule Report Manager
- Update Manager

Graphical Rules Engine (GRE)

Individual work steps of the business process are modeled with the drag & drop method, and logical reactions to possible incidents or status changes within the workflow are defined.

Automation Manager

Easy-to-use module for recording, documenting and optimizing your business processes to be automated.

Object Manager

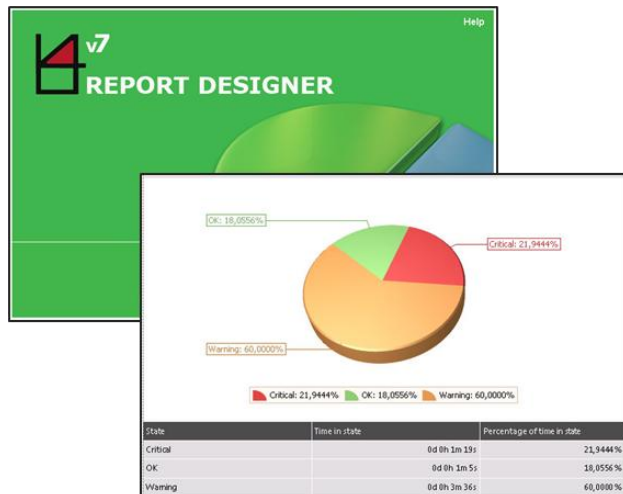
Detailed list of all objects integrated in b4, such as devices, services, scripts, rules, b4 Bots and their work steps...

User Manager

Administration of all b4 users and their access rights

REPORT DESIGNER ENGINE (RDE)

With the RDE you can graphically model your reports and choose in which format, at what time and to whom to send them.



- ✓ Simplify complex data
- ✓ Generate reports in all common formats
- ✓ Recipient-oriented processing
- ✓ Customization

Report Templates

Already created templates
Customization options

Schedule Report Manager

Complete control over reporting
Automated reporting system
Generate and deliver scheduled reports

ROBOTIC PROCESS AUTOMATION (RPA)

Fully automated processing of structured and unstructured business processes with software robots.



- ✓ With mouse click and keyboard
- ✓ Works 24/7 and in compliance
- ✓ Logs & correlates data
- ✓ Easily scalable

b4/RPA Implementation

RECORD & DOCUMENT

The process flow is recorded during the execution of the employee and automatically documented. Professional and technical information about the process and its elements are stored.

IMPORT SCRIPT

Existing scripts are included in the workflow.

REPLAY & CORRECT

Recorded processes can be subsequently run through, evaluated and adapted.

OPTIMISE

Semantic and technical weaknesses are identified and remedied at an early stage.

SAVE & DEPLOY

Completely modeled processes are delegated to the b4 Bot.

END TO END MONITORING

The E2E monitoring with b4 offers a complete information workflow from application monitoring from the end user perspective to service level monitoring.



- ✓ Logs in everywhere like a user
- ✓ Measures performance in real time
- ✓ Reports, informs and alerts

- Verification from multiple locations
- Support of all common and self-developed applications
- Continuous simulation of complex test steps
- Fast deployment and configuration
- Highly secure facility

- Intelligent notification via email or SMS
- Audit-proof logging and long-term archiving of data
- Performance, availability and error messages
- Performance trends over day / week / month / year
- Screenshots and logged performance data

IT AUTOMATION

The b4 automation platform can carry out a large number of IT tasks and IT processes of the most varied of complexity.



INTEGRATED IT-MONITORING

Monitor -> Analyze -> React

SCRIPT MANAGEMENT

Structure -> Versioning -> Deploy -> Execute

NOTIFICATIONS

Via b4 user interface-> Mobile app -> Text message (email/SMS)

- Master/Slave Controller Concept
- INVENTORY-Management
- SYSTEM-Management
- SECURITY-Management
- SNMP-Management
- PATCH-Management
- vSphere-Management